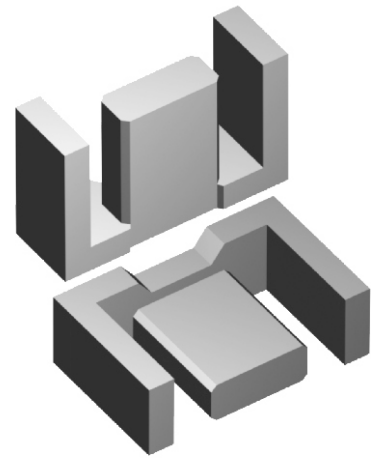
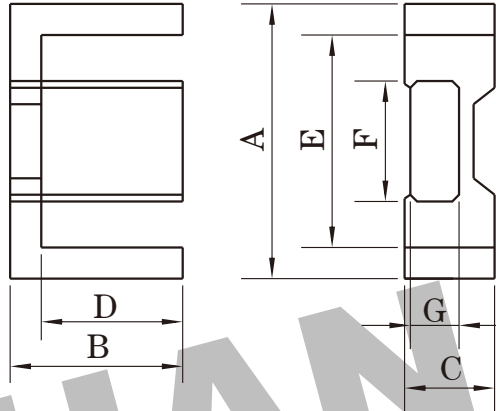


Dimension: (UNIT:mm)

A	30.0±0.8
B	15.0±0.15
C	9.1±0.2
D	11.2±0.3
E	22.4±0.75
F	14.6±0.25
G	4.9±0.15
H	



Test conditions

AL: F=1.0KHz U=0.3V N=10Ts

Effective parameter

C1(mm) ³	Ae(mm ²)	Le(mm)	Ve(mm ³)	Weight(g)
0.98	69.0	68.0	4700	≈12

Core halves

AL measured in combination with a non-gapped core half, clamping force for AL measurements,70+/-20N

Properties of core sets under power conditions

Grade	AL (nH)	μe	AIR GAP μm	Type number
P3	160 ± 3%	≈ 125	≈ 690	EFD30-P3
	250 ± 3%	≈ 196	≈ 390	EFD30-P3
	315 ± 5%	≈ 247	≈ 290	EFD30-P3
	400 ± 8%	≈ 314	≈ 210	EFD30-P3
	630 ± 10%	≈ 494	≈ 120	EFD30-P3
	2100 ± 25%	≈ 1720	≈ 0	EFD30-P3
P4	160 ± 3%	≈ 125	≈ 690	EFD30-P4
	250 ± 3%	≈ 196	≈ 390	EFD30-P4
	315 ± 5%	≈ 247	≈ 290	EFD30-P4
	400 ± 8%	≈ 314	≈ 210	EFD30-P4
	630 ± 10%	≈ 494	≈ 120	EFD30-P4
	2100 ± 25%	≈ 1720	≈ 0	EFD30-P4
HQ2KA	1900 ± 25%	≈ 1560	≈ 0	EFD30-HQ2KA
HQ2K	160 ± 3%	≈ 125	≈ 690	EFD30-HQ2K
	250 ± 3%	≈ 196	≈ 390	EFD30-HQ2K
	315 ± 5%	≈ 247	≈ 290	EFD30-HQ2K
	400 ± 8%	≈ 314	≈ 210	EFD30-HQ2K
	630 ± 10%	≈ 494	≈ 120	EFD30-HQ2K
	1900 ± 25%	≈ 1560	≈ 0	EFD30-HQ2K
P5	1450 ± 25%	≈ 1170	≈ 0	EFD30-P5

Grade	B (mT)at	Core loss (w) at			
	H=250 A/m F=25KHz T=100℃	F=25 KHz B=200mT T=100℃	f=100 KHz B=100mT T=100℃	F=100 KHz B=200mT T=100℃	F=400 KHz B=50mT T=100℃
P3	≥330	≤0.5	≤0.54	-	-
P4	≥330	-	≤0.43	≤2.6	-
HQ2KA	≥340	-	≤0.32	≤2.0	≤0.82
HQ2K	≥315	-	≤0.54	-	≤0.91
P5	≥300	-	-	-	≤0.4

Properties of core sets under power conditions (continued)

Grade	B (mT)at	Core loss (w) at				
	H=250 A/m F=25KHz T=100℃	F=500 KHz B=50mT T=100℃	F=500 KHz B=100mT T=100℃	F=1.0 MHz B=30mT T=100℃	F=1.0MHz B=50mT T=100℃	F=3.0MHz B=10mT T=100℃
P3	≥330	-	-	-	-	-
P4	≥330	-	-	-	-	-
HQ2KA	≥340	≤1.7	-	-	-	-
HQ2K	≥315	-	-	-	-	-
P5	≥300	≤0.6	≤4.5	-	-	-

Note:

- 1:Document is the property of FUAN Inc & is not allow to be duplicated without authorization
- 2:RoHS compliant.